



UBC Food line products are designed and produced with core principle: Food safety. Per different application requirements, UBC has two series are available for your choice: thermoplastic series and stainless steel series.

Thermoplastic series: Stainless Steel Bearing+ Thermoplastic housing

Product Features

- Superior corrosion resistance**

Compared with traditional cast iron housing and pressed steel housing, the thermoplastic polyester resin housing shows superior corrosion resistance. Additionally, the non-magnetic material do not get rusted, which leads to wide application scenarios.

- Clean environment maintenance**

The excellent sealing structure design reduces grease leakage from the bearing, therefore significantly reduces environment pollution. In addition, the bearing housing will not peel off or rust, keeping surrounding environment clean.

- Excellent shock resistance**

It has the shock-absorbing and shock-resistant properties which cast iron housing or pressed steel housing cannot meet.

- Light weight yet strong**

Compared with UBC traditional cast iron housing and pressed steel housing, the use of thermoplastic polyester resin housing can be 30 to 60% lighter than traditional products.

- Water and chemical resistance**

The adoption of thermoplastic polyester resin material housing is both water and chemicals resistance.

Lubrication and Working Temperature

- Food grade grease**

Food grade grease is adopted, like Mobil FM222.

- Working temperature**

Generally, the working temperature of the bearing does not exceed 100 ° C. If the bearing's continuous working temperature is above 70 ° C, it is necessary to increase the lubrication frequency. The minimum limit temperature is -15 ° C, not lower.

- Regular relubrication needed**

Under normal circumstances, the bearing can serve its rated life. Regular re-lubrication is needed to get longer life.

Typical Designs

Bearing Unit with Vertical Housing: SUCRPxxx



Square Flanged Ball Bearing Unit: SUCRFxxx



Oval Flange Ball Bearing Unit: SUCRFLxxx



Round Flanged Ball Bearing Unit: SUCRFCxxx



Stainless Steel series: Stainless Steel Bearing +Stainless Steel housing

Product Features

- Superior corrosion resistance**

Compared with traditional cast iron housing, the combination of stainless bearing and stainless bearing housing, shows superior corrosion resistance.

- Clean environment maintenance**

The excellent sealing structure design reduces grease leakage from the bearing, therefore avoids any possible contamination to food or beverage. In addition, the bearing housing will not peel off or rust, keeping surrounding environment clean.

- Interchangeability& Bearing Replaceability**

The installation dimension of bearing unit is in line with traditional UBC cast iron or steel pressed products and can be interchangeable with various brands. In the event of bearing failure, a new bearing can be fitted to the existing housing.

Typical Designs

SUCP, SUCF, SUCFL, SUCT, SUCFB, SUCFC etc,



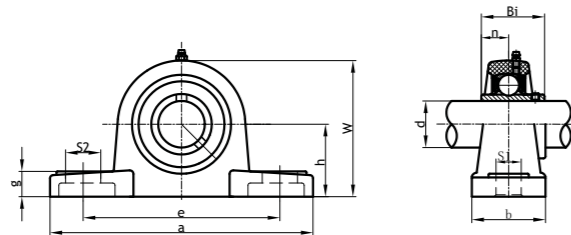
Dimensional Size ranges: 201~208 and 304~316. If you need the technical data, please kindly contact UBC.

Applications

Conveyors, sorters, graders, printers, auger, scrubbing machines and various flushing areas:

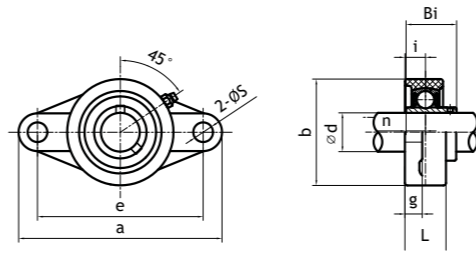


SUCRPxxx



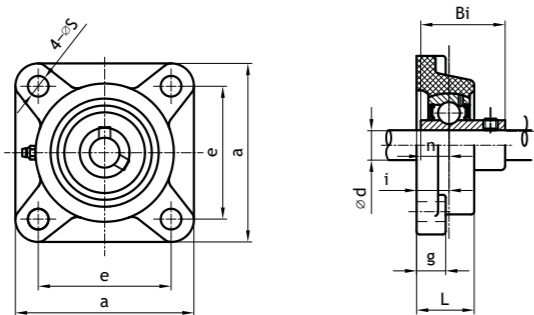
Bearing Unit Assembly Designation	Shaft Diameter d				Principal Dimensions (mm)									Weight (kg)	Set Screw	Installation Torque (Nm)		
	(in.)				h	a	e	b	s1	s2	g	w	Bi				n	
SUCRP201G1	1/2				12	33.3	127	95	38	11	14	14.2	65.5	31	12.7	0.12	M10	18
SUCRP202G1	9/16	5/8			15	33.3	127	95	38	11	14	14.2	65.5	31	12.7	0.12	M10	18
SUCRP203G1	11/16				17	33.3	127	95	38	11	14	14.2	65.5	31	12.7	0.12	M10	18
SUCRP204G1	3/4				20	33.3	127	95	38	11	14	14.2	65.5	31	12.7	0.12	M10	18
SUCRP205G1	13/16	7/8	15/16	1	25	36.5	140.5	105	38	11	14	14.5	71.5	34.1	14.3	0.14	M10	25
SUCRP206G1	1 1/16	1 1/8	1 3/16	1 1/4	30	42.9	163.5	119	46	14	18	17.8	83.5	38.1	15.9	0.20	M12	30
SUCRP207G1	1 1/4	1 5/16	1 3/8	1 7/16	35	47.6	168	127	48	14	18	18	94.5	42.9	17.5	0.25	M12	35
SUCRP208G1	1 1/2	1 9/16			40	49.2	184	137	54	14	18	20	99	49.2	19	0.35	M12	45
SUCRP209G1	1 5/8	1 11/16	1 3/4		45	54	192	146	54	17	20	23	106	49.2	19	0.45	M16	50
SUCRP210G1	1 13/16	1 7/8	1 15/16	2	50	57.2	206	159	60	17	20	23	114	51.6	19	0.55	M16	55
SUCRP211G1	2	2 1/16	2 1/8	2 3/16	55	63.5	220	171	60	17	20	23	126	55.6	22.2	0.65	M16	60
SUCRP212G1	2 1/4	2 5/16	2 3/8	2 7/16	60	69.8	241	184	70	17	20	25	138	65.1	25.4	0.75	M16	65

SUCRFLxxx



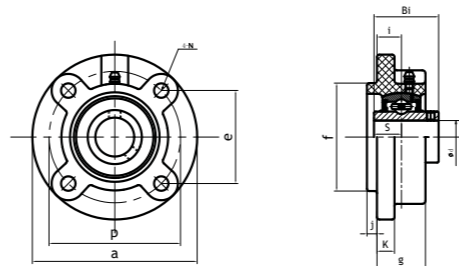
Bearing Unit Assembly Designation	Shaft Diameter d				Principal Dimensions (mm)									Weight (kg)	Set Screw	Installation Torque (Nm)	
	(in.)				a	e	b	g	L	S	i	Bi	n				
SUCRFL201G1	1/2				12	113	90	64	11.4	26.5	11	15.4	31	12.7	0.08	M10	18
SUCRFL202G1	9/16	5/8			15	113	90	64	11.4	26.5	11	15.4	31	12.7	0.08	M10	18
SUCRFL203G1	11/16				17	113	90	64	11.4	26.5	11	15.4	31	12.7	0.08	M10	18
SUCRFL204G1	3/4				20	113	90	64	11.4	26.5	11	15.4	31	12.7	0.08	M10	18
SUCRFL205G1	13/16	7/8	15/16	1	25	131	99	69.5	14	29.5	11	17	34.1	14.3	0.10	M10	25
SUCRFL206G1	1 1/16	1 1/8	1 3/16	1 1/4	30	148	117	80	14	30.5	11	18	38.1	15.9	0.13	M10	30
SUCRFL207G1	1 1/4	1 5/16	1 3/8	1 7/16	35	164	130	90	16	32.8	13	18	42.9	17.5	0.16	M12	35
SUCRFL208G1	1 1/2	1 9/16			40	175	144	99	20	37.5	14	21.5	49.2	19	0.24	M12	40
SUCRFL209G1	1 5/8	1 11/16	1 3/4		45	188	148	108	21	41	17	24	49.2	19	0.32	M16	45
SUCRFL210G1	1 13/16	1 7/8	1 15/16	2	50	197	157	115	21	42	17	25	51.6	19	0.42	M16	50
SUCRFL211G1	2	2 1/16	2 1/8	2 3/16	55	224	184	129	18.5	43	19	25	55.6	22.2	0.55	M18	55
SUCRFL212G1	2 1/4	2 5/16	2 3/8	2 7/16	60	250	202	139	24	48	19	29	65.1	25.4	0.70	M18	60

SUCRFxxx

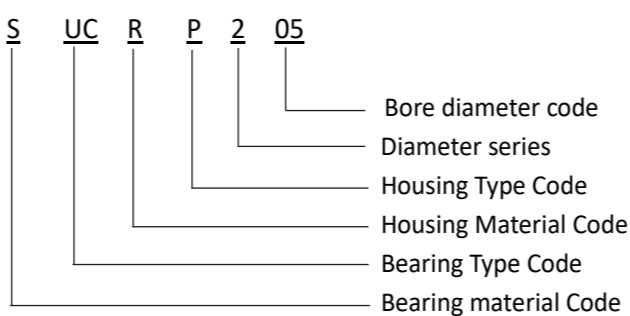


Bearing Unit Assembly Designation	Shaft Diameter d				Principal Dimensions (mm)									Weight (kg)	Set Screw	Installation Torque (Nm)
	(in.)				a	e	g	L	S	i	Bi	n				
SUCRF201G1	1/2				12	86	63.5	13.4	27.8	11	18	31	12.7	0.12	M10	18
SUCRF202G1	9/16	5/8			15	86	63.5	13.4	27.8	11	18	31	12.7	0.12	M10	18
SUCRF203G1	11/16				17	86	63.5	13.4	27.8	11	18	31	12.7	0.12	M10	18
SUCRF204G1	3/4				20	86	63.5	13.4	27.8	11	18	31	12.7	0.12	M10	18
SUCRF205G1	13/16	7/8	15/16	1	25	95	70	14.5	28	11	17	34.1	14.3	0.15	M10	25
SUCRF206G1	1 1/16	1 1/8	1 3/16	1 1/4	30	107	83	14.5	31.5	11	19.2	38.1	15.9	0.18	M10	30
SUCRF207G1	1 1/4	1 5/16	1 3/8	1 7/16	35	117	92	16	34.8	13	21.5	42.9	17.5	0.26	M12	35
SUCRF208G1	1 1/2	1 9/16			40	129	102	17	36.5	14	23	49.2	19	0.33	M12	40
SUCRF209G1	1 5/8	1 11/16	1 3/4		45	137	105	19	41	17	24	49.2	19	0.42	M16	45
SUCRF210G1	1 13/16	1 7/8	1 15/16	2	50	143	111	20	42	17	25	51.6	19	0.51	M16	50
SUCRF211G1	2	2 1/16	2 1/8	2 3/16	55	162	130	19.5	43	19	25	55.6	22.2	0.61	M18	55
SUCRF212G1	2 1/4	2 5/16	2 3/8	2 7/16	60	175	143	19	48	19	29	65.1	25.4	0.72	M18	60

SUCRFCxxx



Bearing Unit Assembly Designation	Shaft Diameter d	Principal Dimensions (mm)											Weight (kg)	Set Screw	Installation Torque (Nm)
	(mm)	a	p	e	i	f	N	g	j	k	Bi	S			
SUCRFC204G1	20	100	78	55.1	10	62	11	20.5	5	7	31	12.7	0.13	M10	18
SUCRFC205G1	25	115	90	63.6	10	70	11	21	6	7	34.1	14.3	0.17	M10	25
SUCRFC206G1	30	125	100	70.7	10	80	11	23	8	8	38.1	15.9	0.19	M10	30
SUCRFC207G1	35	135	110	77.8	11	90	13	26	8	9	42.9	17.5	0.23	M12	35
SUCRFC208G1	40	145	120	84.8	11	100	13	26	10	9	49.2	19	0.28	M12	40



Bearings for **Food-Line Machineries**

www.ubc-bearing.com



An **IKO** Company
Our Bearings, Your Solutions

UBC Precision Bearing Mfg. Co., Ltd.
Suite 1703, Zhongrong Plaza, 1088 South Pudong Road,
Pudong New District, Shanghai, 200120,
People's Republic of China
Tel: +86-21-64904536 Fax: +86-21-64903177
Email: market@ubc-bearing.com